


KANCHI KALVI'S CENTUM COACHING TEAM
SPECIAL QUESTION PAPER - 3

Class: X STD Subject: SCIENCE Marks: 75 Time: 2:30hrs.

SECTION – A (15 x 1 = 15)

Answer all the questions.

I. Choose and write the correct answer

1. During cloning, scientists used the nucleus of udder cell from a ___ old white sheep. (7 year, 5 year, 6 year, 8 year)
2. A dreadful disease spread worldwide in 1970s is _____
(Tuberculosis, Amoebiasis, Malaria, pandemic)
3. Less production of ___ results in diabetes insipidus,
(ICSH , ADH , ACTH , TSH)
4. During adverse conditions, food materials are filled up in cells. these structures are called _____
(Akinetes, Aplanospores , zoospore , Conidia)
5.  is the pattern of forelimbs of vertebrate (Human, Bat, Porpoise, Horse)
6. In a healthy adult, the initial filtrate in the kidneys is about _____ daily (120L, 140L , 110L ,180 L)
7. Civet cat is found in _____ Wildlife Sanctuary
(Point Calimere, Mudumalai, Anaimalai, Kalakkadu)
8. _____ million people suffer from malaria every year.
(100, 200 , 300 , 330)
9. A solution containing less amount of solute is known as _____ solution(Saturated, Super saturated, Unsaturated, dilute)
10. The insoluble substance formed is known as _____
(precipitate. Acid , base , slag)
11. From one gram of gold, nearly ___ of filament can be drawn.
(1.2km , 1.8km , 2km , 3km)
12. Removal of water from two molecules of ethanol is called ___ molecular dehydration. (inter , intra ,both ,none)
13. Using $g = \frac{GM}{R^2}$ mass of the Earth found ($\frac{GM}{R^2}$, $\frac{GM}{R}$, $\frac{GM}{R^2}$, $\frac{GM^2}{R}$)
14. In our country, the potential difference between the two wires are
(210V , 230V , 240V, 220 V.)
15. _____ is an example for volatile liquid .
(kerosene, petrol, ammonia, both b,c)

SECTION – B (20 x 2 = 40)

II. Answer **any twenty** questions.

16. What do you mean by phenotype and genotype of an individual?
Explain.

17. What are variations? Mention their types.

18. What are monoclonal antibodies & its use.



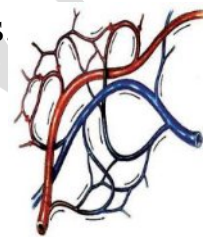
19. Name the stages of Plasmodium.

i) introduced by an infected Anopheles mosquito.

ii) picked up by Anopheles mosquito from an infected human being.

20. Select **any one** of above, re-draw and label any two parts

21. Draw Monocot Seed (Paddy) and label any two parts.



22. Simply Re-draw and label any two parts

23. The Master chemists of our body are the kidneys. Justify

24. Name the three important blood proteins seen in plasma

25. Sugar is converted into alcohol. In the above reaction what kind of process takes place? Which micro-organism is involved?

26. In human beings, air enters into the body through _____ and moves into _____. In fishes, water enters into the body through _____ and dissolved oxygen diffuses into _____.

27. Give two examples of root parasites of plants. Mention the special structures present in them to draw the nutrients from the host plant.

28. Define Reverse osmosis.

29. What is Energy Management?

30. What are the Basic rules for sanitation in public places?

31. List out three stages of Conventional sewage treatment involved?

32. Give the dispersed phase and the dispersion medium in each of the following: a. cheese b. soda water c. Smoke
33. Radha prepared a solution which could be separated by filtration.
i) Name the type of solution ii) Is the solution transparent or opaque? iii) Mention the nature of the solution. iv) Mention the size of the solute particle
34. Molecular mass of Nitrogen is 28. Its atomic mass is 14. Find the atomicity of Nitrogen.
35. Write any two Uses of Salts
36. Why does the colour of copper sulphate change when an iron nail is kept in it?
37. Iron reacts with con. HCl and con. H_2SO_4 , but it does not react with con. HNO_3 . Justify your answer with proper reasons.
38. To design the body of an aircraft, aluminium alloys are used. why?
39. Write down the possible isomers and give their IUPAC names using the formula C_4H_{10} .
40. The mats used in gyms and the padding used in sports uniforms are made up of soft substances. Why are rigid materials not used?
41. Write two principles that are used in rocket propulsion
42. How much work is done in moving a charge of 5 C across two points having a potential difference 10 V ?
43. A current of 0.75 A is drawn by the filament of an electric bulb for 10 minutes. Find the amount of electric charge that flows through the circuit.
44. What is bio-mass? What can be done to obtain bio-energy using bio-mass?
45. How can you identify the three types of mirrors without touching them? Give reasons.
46. What will happen when the frequency of rotation in an AC dynamo is doubled?
47. Light travels at 1.90×10^8 m/s in a crystal, what is the crystal 's index of refraction?

SECTION – C (4 x 5 = 20)

- (i) Answer **any four** questions by choosing **one question** from each
(ii) Each question carries **five marks**.
(iii) Draw **diagram** wherever necessary.

PART – I

48. Tabulate the immunization schedule followed in INDIA
49. Describe the Process of fertilization with a neat diagram

PART – II

50. Describe meiosis with various stages (diagrams) & its significance .
51. Explain the Environmental effects of coal burning

PART – III

52. Describe about Manufacture of Ethanol from Molasses
53. Explain homo atomic molecules and hetero atomic molecules

PART – IV

54. Explain about MOMENT OF FORCE AND COUPLE
55. Describe about Human Eye with a neat diagram

- PREPARED FOR THE BETTERMENT OF ALL CHILDREN

T.S.SARAVANAN
B.Sc(Chem),B.Ed.,M.A(Eng.Lit),M.Phil(Eng.Lit),B.A(His),
S/O P.SIVABALAN
KARUMALAIKODAL,
METTUR DAM (R.S),SALEM (D.T), - 636402
★ EMAIL; sharavananvepp@gmail.com
For conversation: **8675509227,9042331256**

